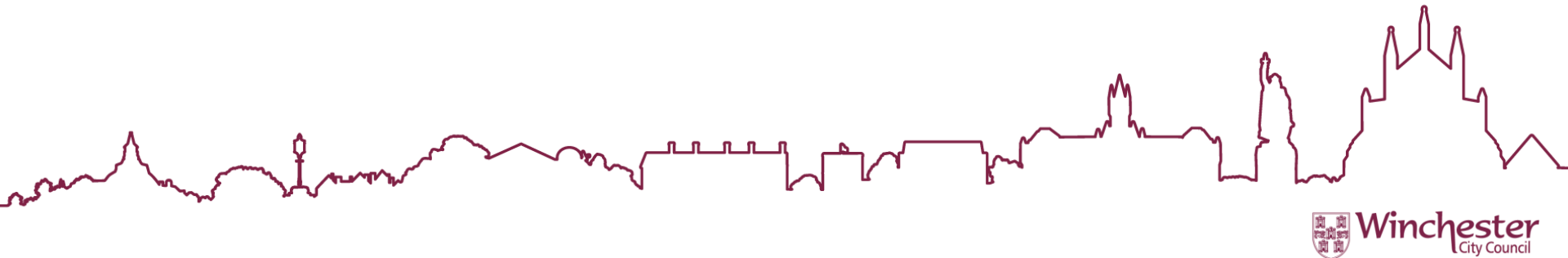


# Kings Walk, Winchester

New lighting installations and change of use of existing loading bay to an events space.

Reference : 22/01681/FUL



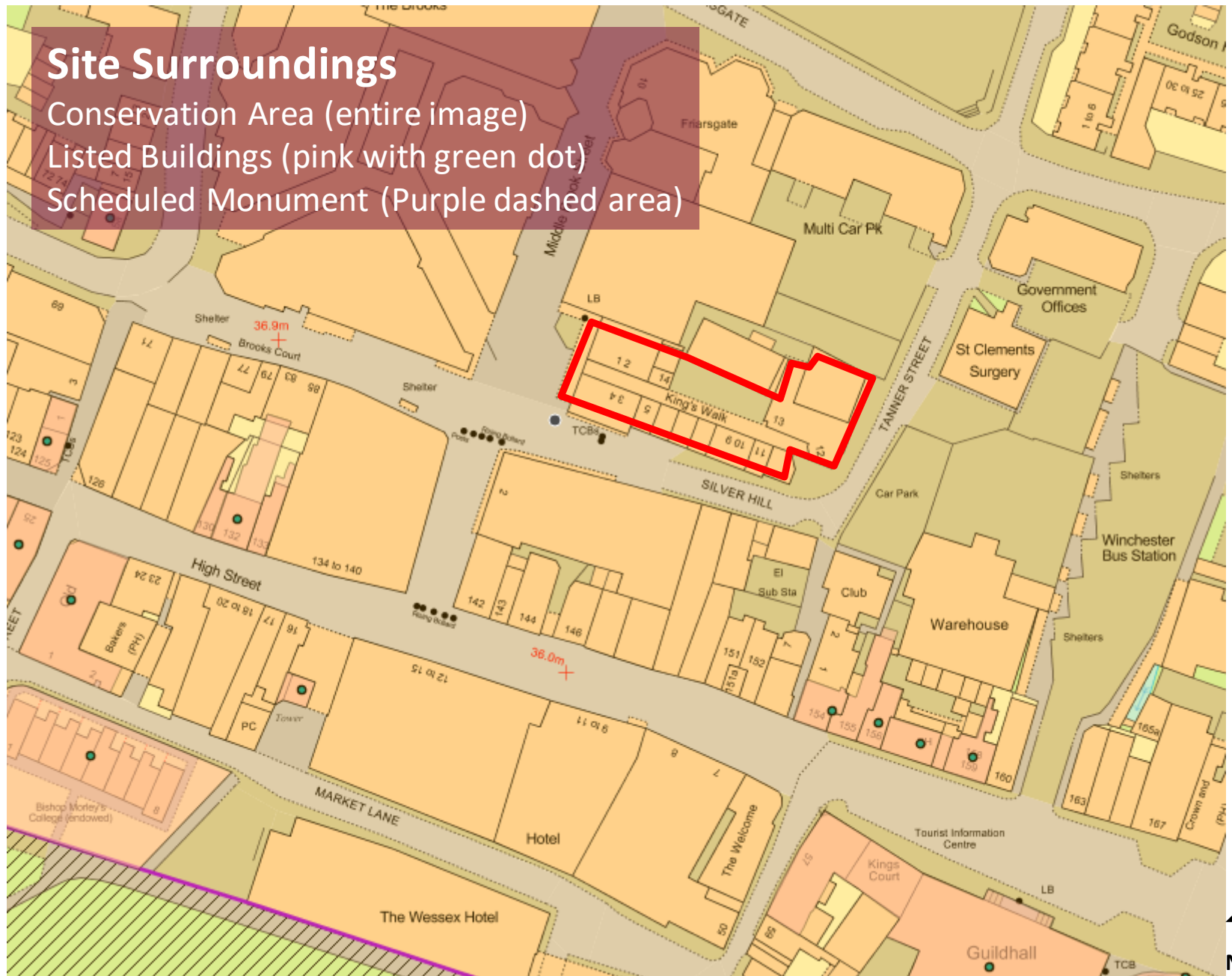


# Site Surroundings

Conservation Area (entire image)

Listed Buildings (pink with green dot)

Scheduled Monument (Purple dashed area)







North

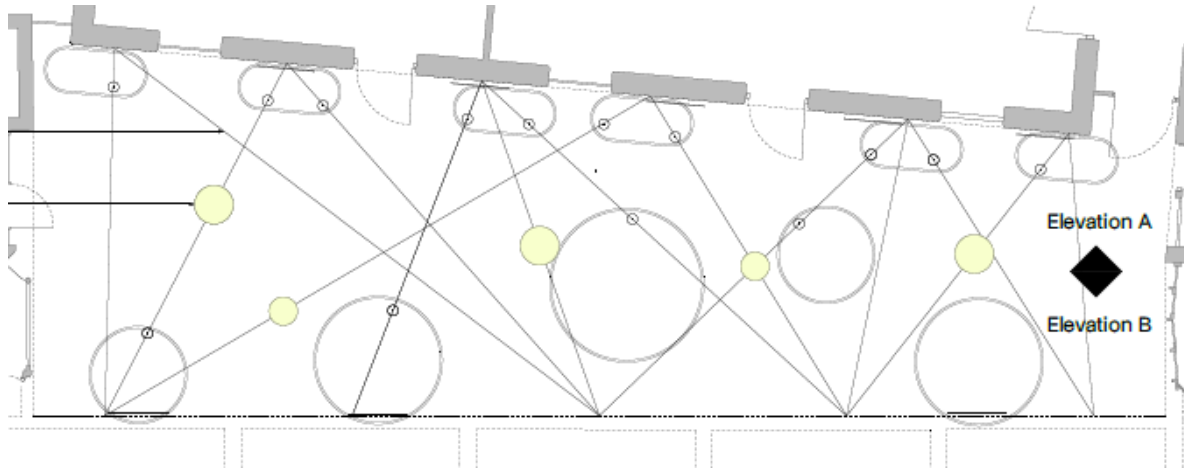


Courtyard

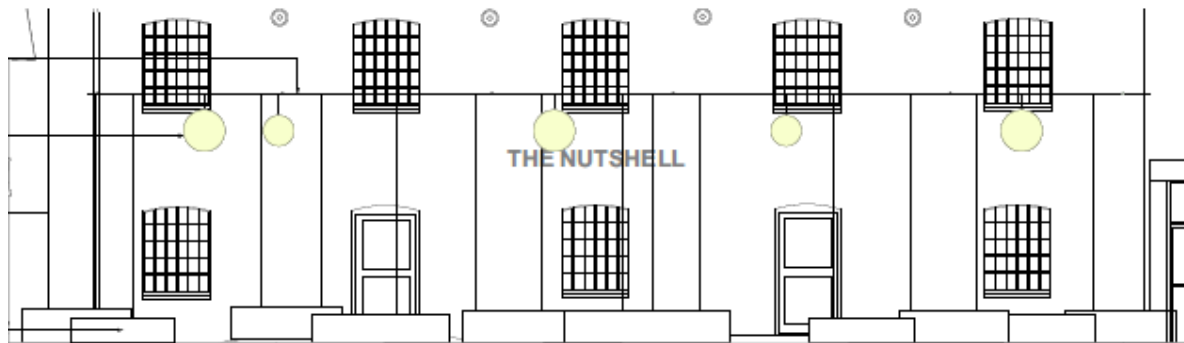
Antiques Market/The Nutshell

Events Space

# Courtyard Lighting



Aerial View



Interior  
Courtyard View





Courtyard as existing

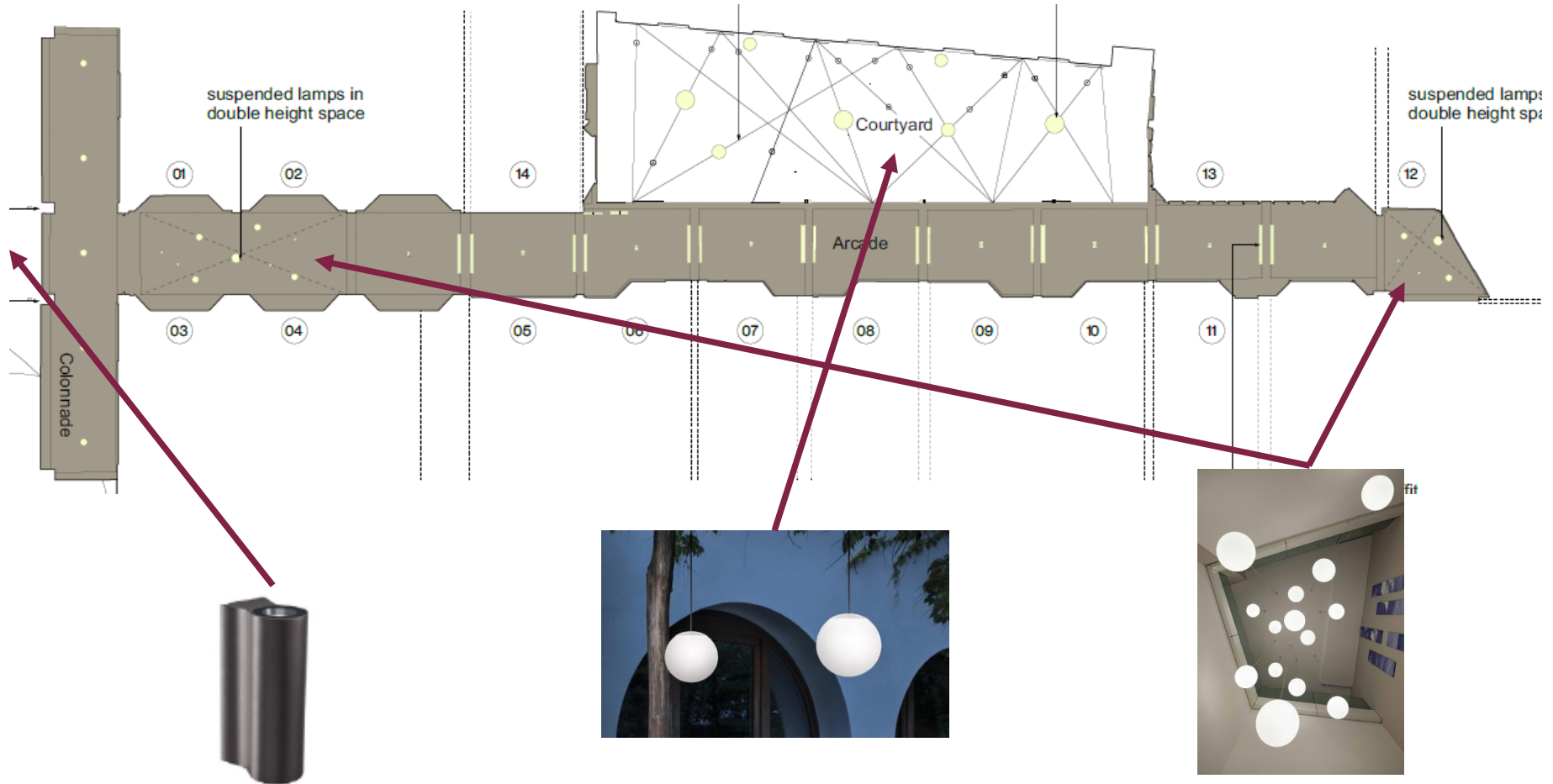




Courtyard as existing – proposal replaces existing lighting



# Other Lighting



2x light fixtures at entrance

Sphere lamps in courtyard

Suspended lamps in double height space

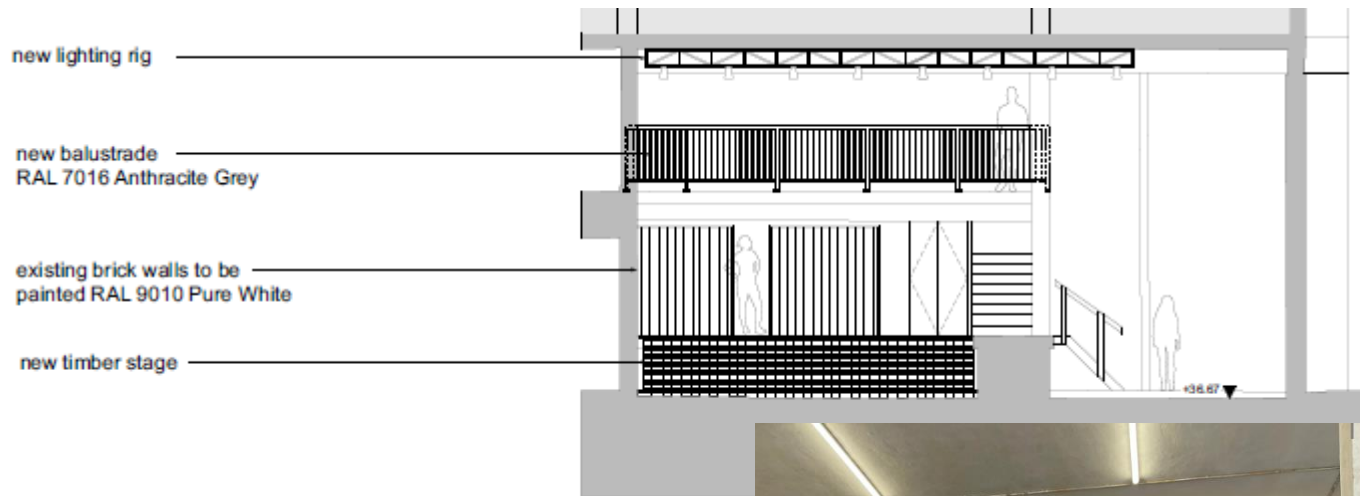
## Events Space



Exterior of proposed events space (top),  
Current interior and use as bin store (right)



# Events Space



Section (top) of proposed changes to introduce stage and lighting, from the same perspective as image to the right



## Events Space



View from events space (entrance doors behind camera)



## **Officers Recommendation:**

The development is recommended for permission as it is considered that no significant additional adverse impact is demonstrated upon the character and appearance of the existing building and the surrounding area and the proposal would not harm neighbouring residential amenity.

The development does not raise any material matters that would sufficiently weigh against the granting of planning permission.